

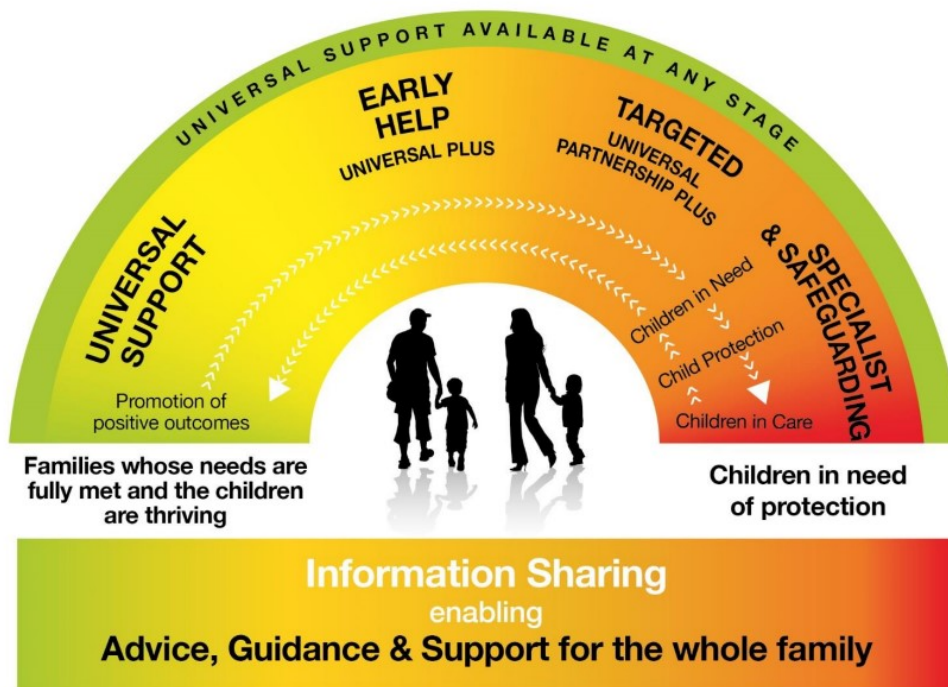


Changing Lives.
Changing Futures.



Nottingham
City Council

Multi Agency Safeguarding Children Hub (MASH)



Download and view the [Nottingham City Threshold of Needs](#)

IF YOU ARE WORRIED ABOUT A CHILD, PLEASE CONTACT NOTTINGHAM CITY MASH:

Contact Number: 0115 8765600

Email: citymash@nottinghamcity.gov.uk

Web: <https://nottinghamcity.gov.uk/marf>

Opening Hours: 08:30—16:50.

In an emergency, please contact EDT on 0115 8765600 outside of these hours.

If you are worried that a child is at immediate risk, please call 999.

