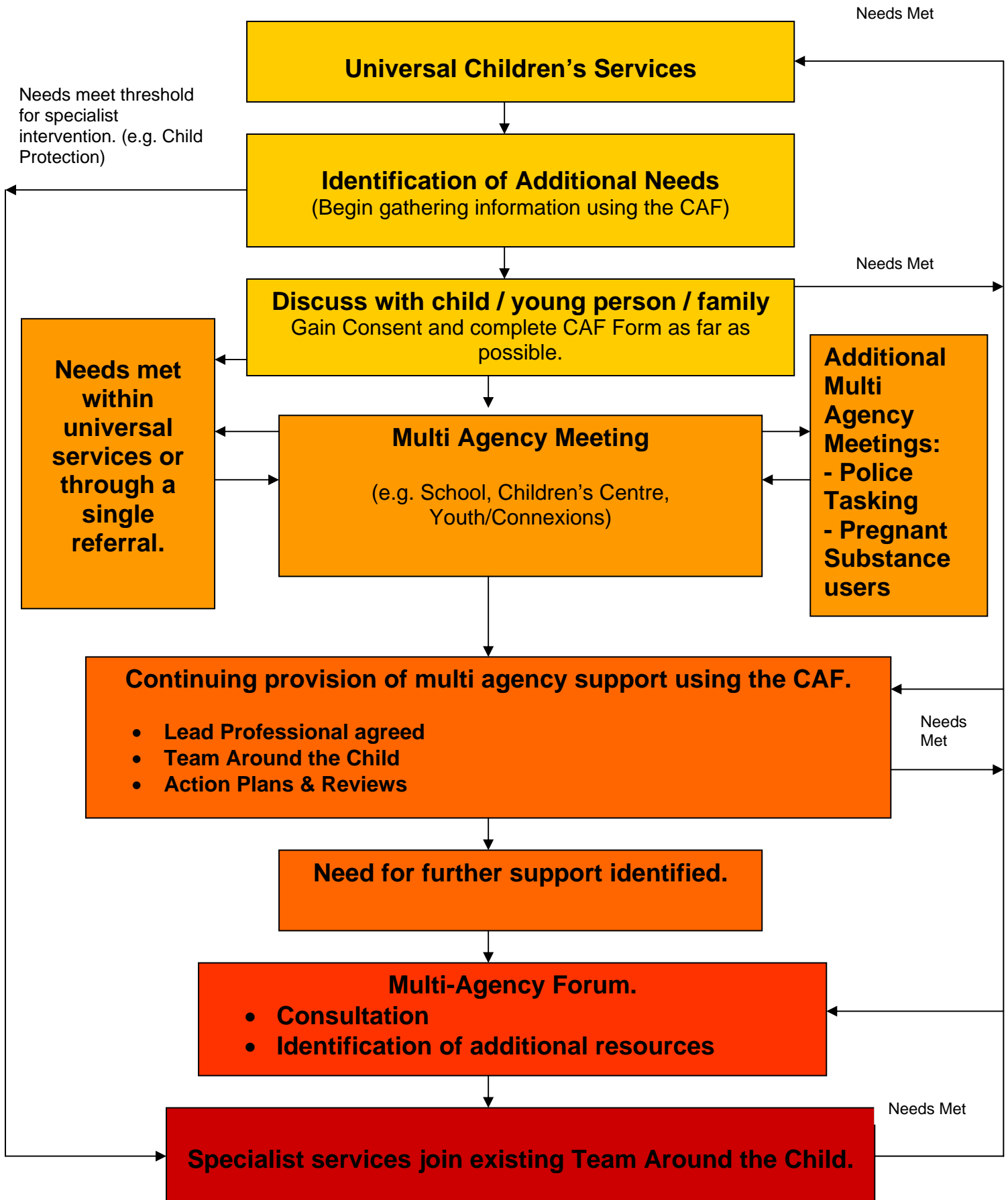


## MULTI-AGENCY FRAMEWORK



Additional Information:

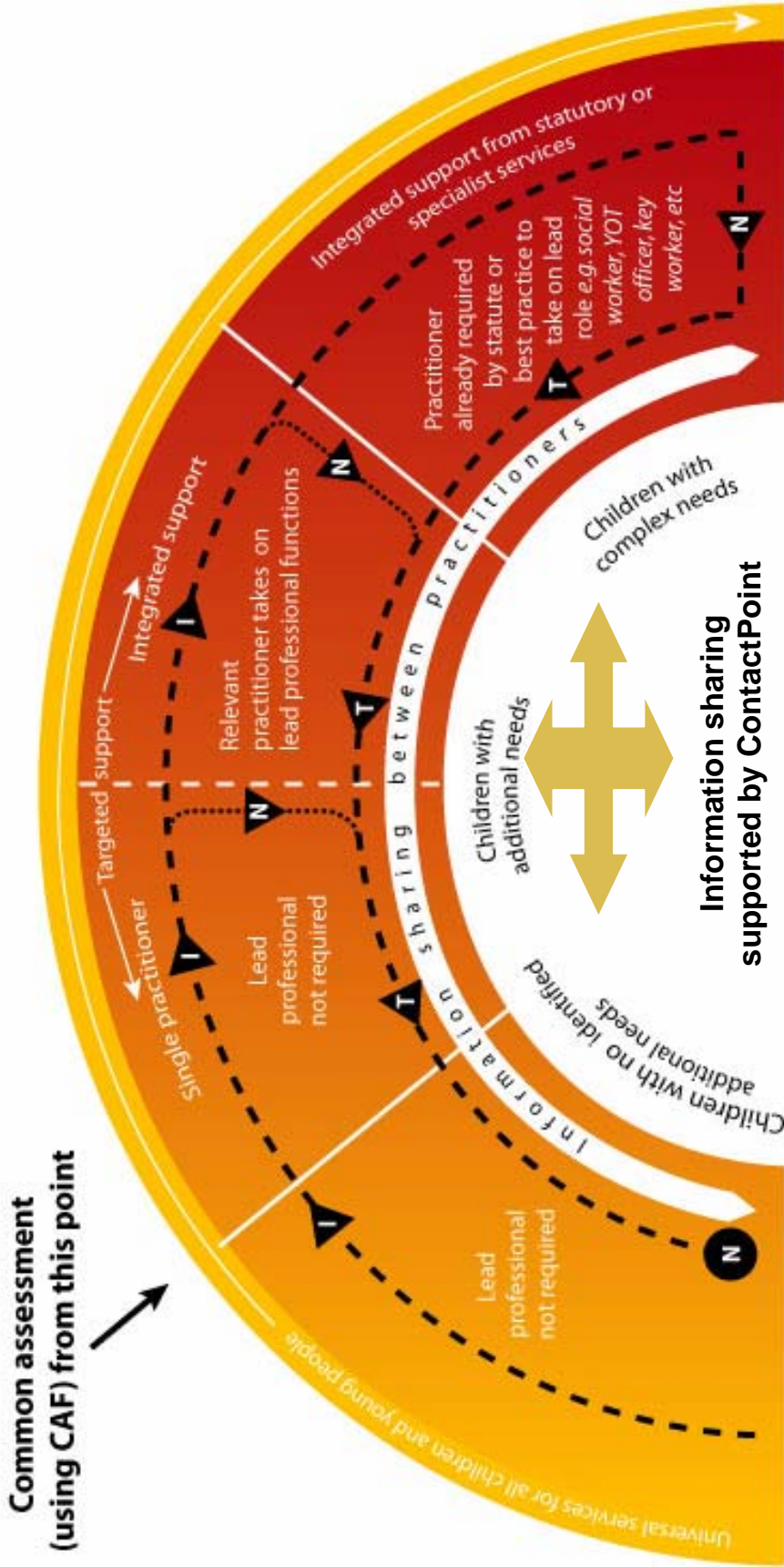
The Multi Agency Framework has been developed by the Locality Based Steering Group as a practical solution to developing our early intervention and prevention work with families in Nottingham City.

The Multi Agency Framework aims are to:

- Achieve better outcomes for children and young people through early intervention and prevention, providing an appropriate level of support at the earliest opportunity.
- Develop the provision of co-ordinated, integrated multi-agency provision at universal, targeted and specialist levels to provide seamless service provision.
- Develop, commission and arrange our services around children and young people's needs.

# CONTINUUM OF SERVICE PROVISION

**I = Identification**  
**T = Transition**  
**N = Needs**



Additional Information:

The Continuum of Service Provision (or windscreen wiper diagram) is embedded within Nottingham City's Preventative Strategy and Joint Commissioning Framework.

The diagram depicts our aim to provide seamless service provision for children, young people and families within the city, ensuring an integrated approach across agencies providing universal, targeted and specialist services.

The diagram clearly illustrates the position of the Common Assessment Framework and role of Lead Professional.